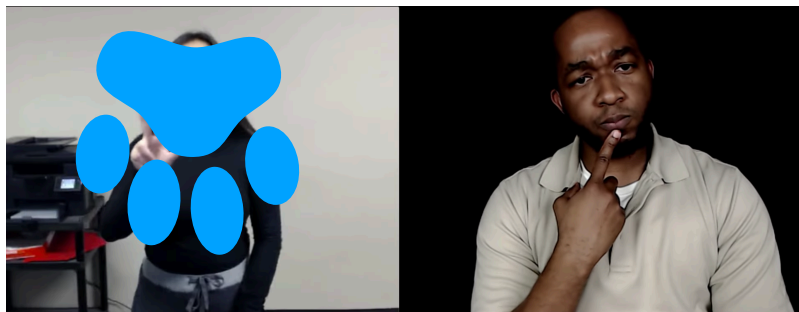


Washback is known as feedback. My washback approach will have me as a teacher to demonstrate the right signs and explain why a student produced signs was wrong or unclear. I use two screens in one video and upload the Youtube, so that students can see my feedback. Youtube is convenient because Youtube offers the public, unlisted, and private videos. The public videos are for anyone that can see at any time. The unlisted videos will work for people who are given the link. The private video is for the owner who will view it only. Also, Youtube is free! If the students happen to receive an exam right before the semester ends, the students will get a washback video. However, if the students had an opportunity to have a meeting with me as a teacher on the week of final exam after completing a final exam, the student will get live feedback. Also, it gives students' opportunity to ask me and discuss with me on the spot.



Summative approach will be provided for midterm and final exams. The students will be interviewed to use their expressive skills. Formative exams will be provided weekly or biweekly. It depends on students' knowledge and performance. It will allow me as a teacher to assess students' reception skills.



The rubric is what I would use for the whole semester. The students will know the expectation of assignments, projects, for a rubric.

	5 PTS: Excellent	4 PTS: Proficient	3 PTS: Developing	2 PTS: Attempting	1 PTS: Missing
<b>Production</b>	Produces majority of signs and finger spelled words correctly; no major production errors	Produces most of the signs and finger spelled words correctly and signs clearly	Signs clearly; <u>misproduces</u> some signs and finger spelled words	Difficult to understand, is struggling or misproduces most signs (more than 5 serious errors)	Produces almost no signs or finger spelled words correctly
<b>VOCABULARY RANGE VARIETY</b>	Appropriately uses correct vocabulary	Appropriately uses correct vocabulary most of the time.	Sometimes appropriately uses correct vocabulary and grammar	Rarely uses or doesn't appropriately use correct vocabulary and grammar (more than 5 serious errors)	Almost never appropriately uses correct vocabulary and grammar
<b>Grammar/Complete Sentences</b>	Appropriately uses correct grammar (verb & spatial agreement, facial expressions, etc); Almost always signs complete sentences	Appropriately uses correct grammar most of the time; mostly signs complete sentences	Sometimes appropriately uses correct grammar; sometimes signs complete sentences	Rarely uses or doesn't appropriately use correct grammar (more than 5 serious errors); Rarely signs complete sentences	Almost never uses or doesn't appropriately use correct grammar; Almost never signs complete sentences
<b>Fluency</b>	Almost always signs continually with pausing, stopping, false starts, correcting, and repeating	Mostly signs continually without pausing, stopping, false starts, correcting, and repeating	Sometimes signs continually without pausing, stopping, false starts, correcting, and repeating	Rarely signs continually without pausing, stopping, false starts, correcting, and repeating	Almost never signs continually without pausing, stopping, false starts, correcting, and repeating